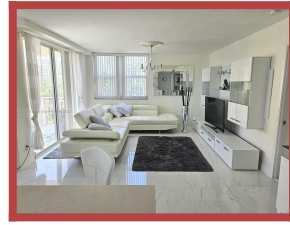


Condominium
ISOLA CONDO 602
#MLS: A11444785
\$ 3 650



Listing date	2023/08/30
City	Miami, FL 33131
Address	770 Claughton Island Dr, #602
Area	99 m ²
Tax/year	- ? -
Built year	1990
Bedrooms	2
Bathrooms	2
Garage	✓

- » 1 ASSIGNED PARKING SPACE! CORNER UNIT IN BRICKEL KEY ISLAND.
- » WASHER AND DRYER INSIDE THE UNIT.

INTERCOASTAL AND CITY VIEWS! UNFURNISHED FOR 3,500 OR FURNISHED for 3,650. Features ceramic flooring throughout. Open kitchen layout out with cooking island and top-of-the-line appliances. Master bedroom with built-in shelving and master bath en-suite with combination tub and shower. Walk-in closet. Building amenities include a pool (Pool and deck are under renovation), gym with water view, business center, clubroom, valet, and 24-hour security. CENTRALLY LOCATED within walking distance from Equinox gyms, Whole Foods, major banks, and Publix supermarkets. Near Brickell City Center, it features designer stores, restaurants, and nightlife entertainment.

www.miamibeachrealtor.com
CALL: +1 786-468-4380